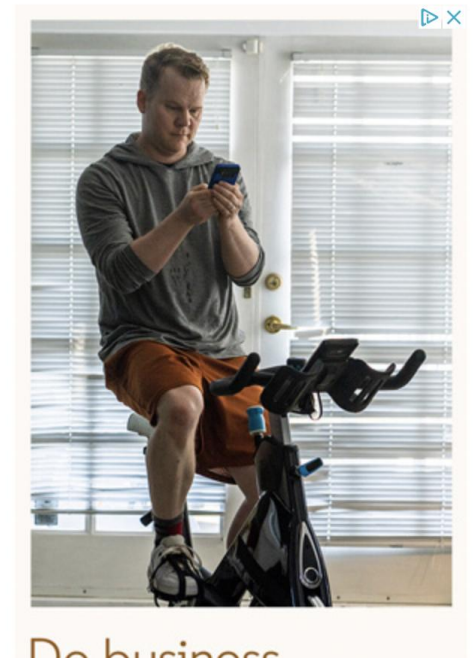
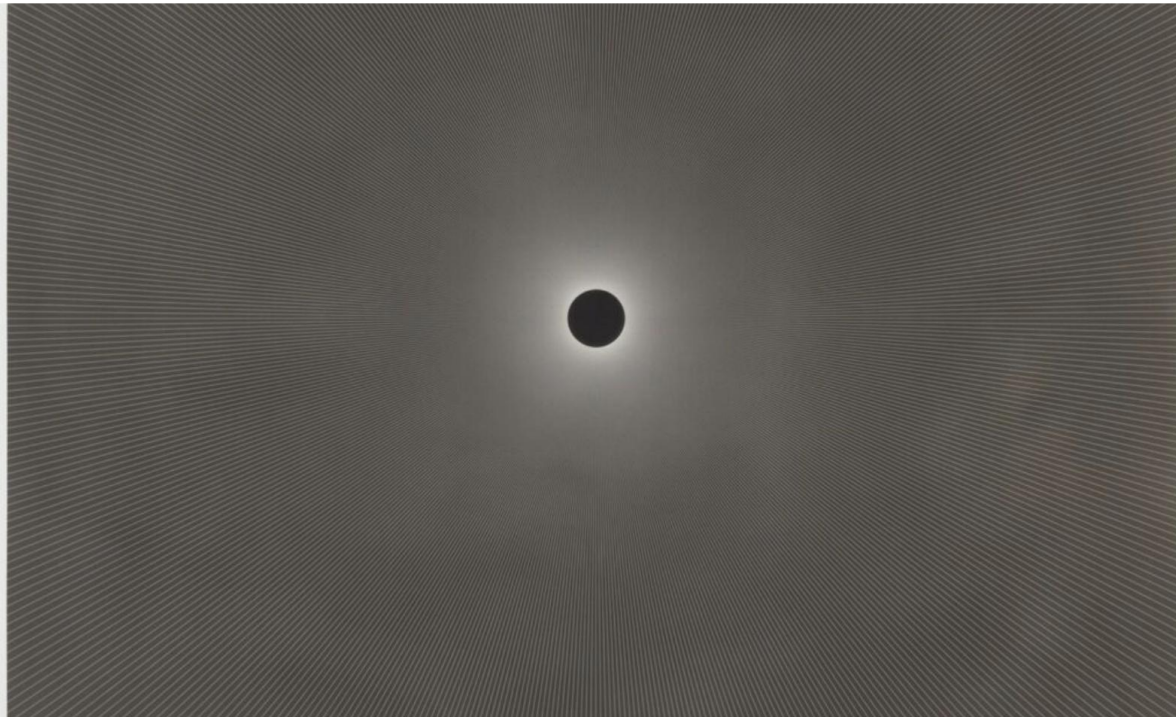




DATEBOOK PICK

'Homage to a Circle' at Anthony Meier Fine Arts highlights diverse group of female artists

Tony Bravo | December 7, 2020 Updated: December 7, 2020, 12:37 pm



| Marsha Cottrell, 'Untitled,' 2018. The work is on view at Anthony Meier Fine Arts, part of the "Homage to a Circle" exhibit.

Anthony Meier Fine Arts is partnering with Jessica Silverman Gallery for a major four-woman show at the Anthony Meier space while Silverman relocates her gallery. The collaboration is a first-of-its-kind undertaking between the two highly esteemed San Francisco galleries, celebrating the work of a diverse group of female artists in the Beaux Arts splendor of the Willis Polk-designed Meier space.

"Homage to a Circle" features artists Zoe Leonard, Tammy Rae Carland, Marsha Cottrell and Davina Semo. Work includes Leonard's photographs of sidewalks, Carland's "Discograms" made on photographic paper with light refracted from a disco ball, Cottrell's laser-printed images of spectral suns and Semo's cast-bronze "Bells" series. The show is also available to view virtually on the Anthony Meier [website](#).

"Homage to a Circle": On view by appointment only. Anthony Meier Fine Arts 1969 California St. 415-351-1400 gallery@anthonymeierfinearts.com <http://www.anthonymeierfinearts.com/>



Tony Bravo

Tony Bravo is a San Francisco Chronicle staff writer. Email: tbravo@sfchronicle.com

Do business where business is done.

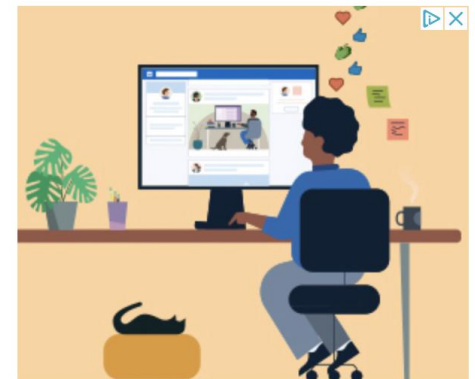
Learn more

LinkedIn Marketing Solutions

Your weekly guide to Bay Area arts & entertainment.

E-mail Address

SIGN UP



Share what your organization has to offer with